

PRINCIPAL'S END OF HALF TERM MESSAGE



Dear Parents,

This half term has flown by as I am sure next half term will do as well. The lighter mornings and the promise of Spring, has been most welcome.

As ever the academy has been busy, we end this

half term with National Apprenticeship week, meaning this week has been full of a range of activities for all students in all years groups, including our annual Apprenticeship Careers Fair.

The main focus of this half term has been mock examinations for our Year 11 and 13 students, we also had some Year 12 sitting exams in readiness for the summer. The students have approached these exams extremely well, showing maturity and resilience. Now that students have received their results, we turn our focus on supporting them to prepare for the formal examinations.

As we approach the Summer Term, we look forward to a range of trips and visits on the horizon including; the annual team building weekend focusing on revision, a reward trip in Science and the continued involvement of our employer partners. Please encourage your child to check their emails to make sure they don't miss out on these opportunities.

Claire Morris
Associate Principal

MESSAGE FROM THE CEO OF WMG ACADEMY

This has been an extremely busy and productive half term in both academies, laying foundations for exams in the summer and hosting a myriad of employer events to prepare students for their next steps. Engineering teams have been busy in both academies updating equipment and resources. Both academies were awarded this year in excess of £300,000 each from the central government to purchase additional specialist equipment to ensure Sixth Form students on our T Level courses can become expert on industry standard equipment unrivalled by any other provider in the region.

The countdown has started for the Summer examination series which is under 10 teaching weeks away! with staff in both academies planning lots of support and preparation for students in the run up to their exams.

We are looking forward to the next half term and to welcoming important visitors to both academies to showcase the work we do with students and our unique pathways. The academies will see visits in March and April from local MPs as well as former government Minister for Business, Greg Clarke and CEO of Make UK and current government Business Strategy Advisor, Stephen Phipson. Photos and details of these visits will be shared in the next newsletter.

In the meantime, whilst thanking parents and staff for their ongoing support and students for their perseverance and commitment, I wish them all a safe and restful half term.

Stewart Tait - CEO



UTC Health Tech Challenge

This half term, three teams of Year 12 students have just embarked on the UTC Health Tech Challenge, where the successful WMG victors will compete against UTCs all across the UK! The students will be researching, designing and producing a prototype of a product they believe will solve a problem for a particular demographic of their choosing. Their projects will be coming to a close in late March so watch this space for some exciting ideas in the next newsletter!

UTC Health Tech Challenge 2025



WMG ENGINEERS TO BMW

Alex Morgan from BMW came into WMG Solihull to support our engineering students make sure they have the best possible opportunity to gain a BMW apprenticeship in August. This was attended by Y11 and Y13 students and was hugely appreciated by our students, everything crossed for them.

MAD Museum

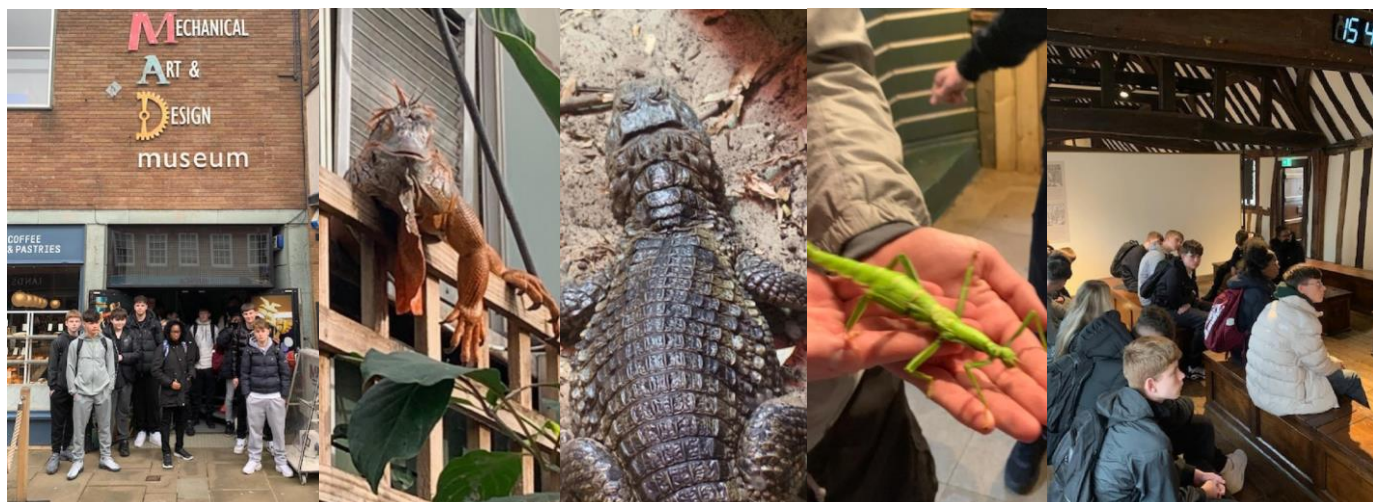
We took 40 students from across years 10 and 11 on a Product Design and Engineering Design visit to the MAD Museum in Stratford on Tuesday 4th Feb.

They got to check out some of the various new gadgets and initiatives that were on display, seeing first hand how mechanics work and how the elements in these gadgets work in conjunction with each other.

As part of the trip, they were also given the chance to visit the Butterfly Farm, where they were able to handle stick insects and watch the crocodile being fed.

As well as find out what school life was like in Tudor England by visiting the Guild Hall and Shakespeare's School. They took part in a discussion about what a typical school day was like, and found out that writing in wax was the only way they could practise their hand writing because paper at the time was very expensive and had to come out of the teachers own pocket.

The students really enjoyed their trip, and they got the chance to explore the wonderful town of Stratford Upon Avon



YEAR 11 STUDENTS GET CREATIVE

Our Year 11 Creative i-Media students have been working on their NEA tasks. This NEA encourages the learner to combine elements of their learning and to show accumulated knowledge and understanding across the content areas.

Across the 17 hours students have to plan, design make and test a product for a brief that they have not seen before.

All students have undertaken this assessment professionally and with exemplary attitudes and behaviour. I am looking forward to marking their amazing work.

UP COMING TRIPS AT SOLIHULL

We have a number of Academy Trips coming up in the next few weeks

Youth Hostel Association "Going Green" - Wednesday 12th to Friday 14th February

Digital Day - Visit to Bletchley Park - Wednesday 5th March

STEM Revision Weekend - PGL - Friday 28th to Sunday 30th March

CHILDREN'S MENTAL HEALTH WEEK

For Children's Mental Health week we have celebrated the of "Know yourself, Grow Yourself". Through the assemblies and tutor activities students have learnt about how they can build and grow their resilience by understanding themselves and recognising their emotions.

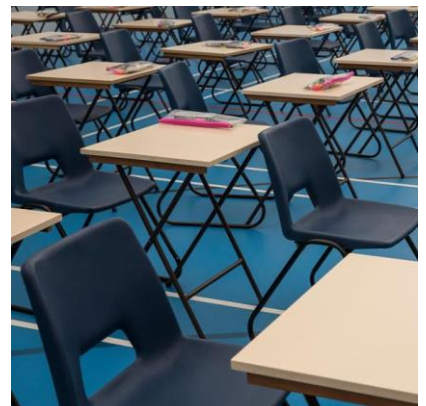
If you are worried about your child's mental health there is lots of support out there. Encourage them to speak to an adult that you trust about it. That might be a parent or family member, a family friend or even a teacher at school.

If you're not sure who you would like to talk to, ring Childline on 0800 1111 who will be able to help you with how you are feeling, or visit www.childline.org.uk. We also have links to a range of websites under the Safeguarding section of the Academy Website.



MOCK EXAMS AND REVISION

All of our Year 11 and Year 13 students worked incredibly hard this half-term to revise for and sit their mock exams. We appreciate all of the hard work that went into this and we are confident your results will be a reflection of your hard work, resilience and dedication. We know exam periods can be difficult so well done to all for persevering and putting the work in. Don't forget that mock results day is on Thursday 13th February. After this, you will have a clear picture of areas you are confident with and areas to target your revision. Please remember that intervention sessions are running during half-term. If you are involved in this, please make sure you turn up on time, prepared to learn and really make the most of this additional time to revise and prepare for your upcoming summer exams.



Examination Entries Now Available on MCAS and Student Portal

We would like to inform all students in Year 10, 11, 12, and 13 who are sitting examinations that their Statement of Entry has now been uploaded to MCAS and the Student Portal. It is important to check this document carefully to ensure all details are correct. If you have any questions, please contact our Exams Team at solihull.exams@wmgacademy.org.uk. For further information about examinations, including key dates and guidance, please visit our [Examinations Page](#).

A HEARTFELT THANK YOU FROM NARTHEX

We're pleased to share a message of gratitude from Narthex, the community organisation that received the majority of our students' lost property, including winter coats.

"The gesture is greatly appreciated and welcomed not only by us but the clients who visit us." - Amer Khan, Project Director.

Thank you to everyone who contributed to this initiative.
Your generosity has made a real difference to those in need this winter.



APPOINTMENT OF A WMG SOLIHULL PARENT GOVERNOR

After February half term we will be advertising for 2 new parent governor to join our friendly governing body. Our governors come from a range of different backgrounds, have different skills and experience, but all share a common interest of wanting the best possible education for the young people in our Academy and share the business-like, business led vision of WMG. Governors are essential for the effectiveness and success of the Academy and it is an extremely rewarding and fulfilling role. All Academy Governors serve a 4 year term. They act as a 'critical friend', working voluntarily to strategically oversee the running of the Academy.

There are no specific qualifications for the role of a governor. You just need the right attitude, enthusiasm, and time to devote to the role.

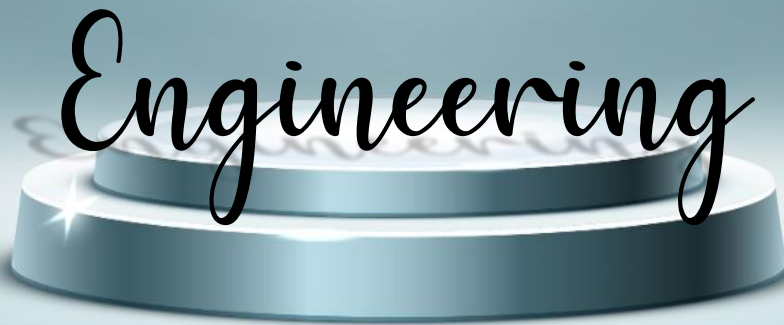
If this would be of interest, please keep your eyes open for the official advert that will be sent after half term.

F1 IN SCHOOL REGIONAL EVENT

Accelerating, the F1 in Schools team, delivered an outstanding performance at the recent regional event, making WMG proud with their incredible achievements. The team recorded a blistering lap time of just 1.7 seconds, showcasing their dedication, engineering skills, and teamwork. Their impressive result reflects countless hours of hard work, from designing and testing their car to refining every detail for maximum speed and efficiency. Competing at such a high level, Accelerating demonstrated not only technical excellence but also resilience and determination, cementing their reputation as a formidable team in the competition.



Spotlight of the Term



WHAT ARE YOU WORKING ON IN ENGINEERING LESSONS AT THE MOMENT?

All Engineering Manufacture-

Year 10 students have now completed the manufacturing of their product, as specified by the examining body (the slide hammer). To achieve this, all students have learned to use a manual lathe and hand tools effectively. Additionally, they have adhered to proper health and safety protocols and completed quality control checks throughout the process.

Year 11 students are also working on manufacturing their product, as specified by the examining body (the depth gauge). However, in contrast to the Year 10 project, this focuses on using CAD and CNC technology. This approach allows students to gain a broad understanding of different manufacturing methods and how these impact the final product, quality control, working conditions, specialisms, and more.

Both year groups are now using this evidence to complete their coursework assignments.

Engineering Design

Students are exploring the iterative design process (Research - Design - Test - Evaluate) and how it applies to designing a product specified by OCR, with variations introduced each academic year.

Throughout the course, students will create hand-drawn sketches using a range of drawing techniques taught in lessons. They will also use a Pugh Matrix with justification to highlight their preferred design, engage in design development, and produce exploded views and third-angle projection drawings. The process will then progress to CAD development

Product Design

Product designers are all working on their portfolio for submission. This represents 50% of their final grade. Some of the students in Year 11 and 13 have been showing true commitment by arriving into the academy at 7:30am to put in some extra work, and then stay in the academy till 17:30 to make sure they are giving themselves the best opportunity to gain an excellent grade.

Continued.....

Year 12s are working well, producing an outstanding start to their portfolios. Along with this, they are scoring well on their theory tests and showing a very good understanding of product design.

A Level Electronics students have been working on operational amplifiers and learning about this topic through practical investigation. This work is an important part of the course and has been brilliant to how well the students' applied themselves to this.

Baker Award: Futuristic Bike Project was launched for Enrichment, students will be looking into what the future holds for bikes, looking into advanced manufacturing techniques and also conceptual technology that could be a reality in 10-15 years.

CAD Enrichment - KS4 students have been learning how to use specific icons and features in Solidworks which has enabled them to create a number of components, assemblies and mates. These students will now be moving their current skills to turn their components into STL Files (Stereolithography) and making parts on the 3D Printer.

T-Level Workshop lessons – KS5 students are completing their clamp in the workshop. During this project, they focus on refining essential skills such as sawing, filing, drilling, and welding. These skills will contribute to their development as they prepare for their Occupational Specialism (OS) assessment in Year 13.

T Level Foundation - KS5 students have been learning how to use specific icons and features in Solidworks which has enabled them to create a number of components; these components are geared more towards manufactured components which are progressively getting more intricate over the course of the weeks being taught.

Students are being shown shortcuts and more specialist methods to enable them to draw the more intricate and elaborate components quicker.

Students are also being taught how to create Engineering Drawings from each component created so that they meet BS8888.

BTEC Engineering - Some highlighted Units.

Unit 41 – Traditional and Specialist Machining Processes

In this unit, students are learning to differentiate between traditional and specialist machining processes:

- **Traditional:** Lathe, Milling Machine, and Pillar Drill
- **Specialist:** Honing, Broaching, and Electrical Discharge Machining (EDM)

Students will develop an understanding of how specialist machining processes can manufacture components in various batch sizes, offering superior surface finishes and tighter tolerances. Additionally, they will focus on the safe setup of traditional machining processes, including the correct feeds and speeds for specific materials. Health and safety regulations will also be emphasized throughout their practical workshop experience.

Unit 10 – SolidWorks and Engineering Drawing

Students are learning to use specific icons and features in SolidWorks, enabling them to create a variety of components.

Assignment 1: Creating parts for an airplane landing gear, applying specific materials to each part, and producing engineering drawings that conform to British Standard drawing convention (BS8888). Students will also refine two parts and update the relevant drawings.

Continued.....

Assignment 2: Students are mastering the creation of engineering drawings with multiple layers, learning how to incorporate and display these layers using tools and document properties.

Assignment 3: Students will focus on creating components with 'thin features' using sheet metal and surface modelling techniques.

Unit 25 Mechanical Behaviour of Metallic Materials (Materials Engineering)

This unit provides students with a detailed understanding of how the internal structure of metals influences their external performance. The course explores the relationship between a metal's microstructure and its macroscopic properties, examining how atomic-level interactions affect the material's behaviour when subjected to various forces.

Students will use phase diagrams as a key tool to understand the stable phases present in metals at different temperatures and compositions. This knowledge will allow them to predict and control the microstructure, and in turn, the properties of metals.

Throughout the unit, students gain practical experience by conducting both destructive and non-destructive testing methods. Destructive tests, such as tensile testing (to measure strength and ductility), impact testing (to assess toughness), and hardness testing (to gauge resistance to indentation), offer valuable insights into how metals respond to different forces.

In addition, students will learn non-destructive testing techniques, including Dye Penetrant Testing (DPT) for detecting surface flaws and visual inspection for identifying surface imperfections. These methods are crucial for quality control and ensuring the integrity of metallic components without causing damage.

By combining microstructural analysis, phase diagrams, and various testing methods, students will gain a deep understanding of how to select and utilise metallic materials for a wide range of engineering applications.

HIGHLIGHT OF THE HALF TERM

Bosch Engineering Day

All GCSE Electronics students spent an exciting day with Bosch engineers, learning about next-generation fuel cells and their applications in the automobile industry. Students worked in groups to build and test their own hydrogen fuel cell-powered cars. It was an engaging and insightful day, and we look forward to future collaborations with Bosch.

MAD Museum Trip

Product Design students visited the MAD Museum in Stratford-upon-Avon, where they explored innovative designs and interactive exhibits. Article on page 2.

F1 for Schools Event

Three teams participating in the F1 for Schools competition took part in a thrilling race event, showcasing their cars in a day of intense competition. Article on page 4.

BMW Support for Level 3 & 4 Application

Alex Morgan from BMW visited to provide valuable support for students applying for Level 3 and 4 courses, offering expert advice and guidance for their future career paths in engineering.

Continued.....

STAR STUDENTS-

Year 10 CN Manufacturing Students- Blake Whalen for Outstanding ATL, Joseph Penney for Outstanding ATL and progress Cambridge Nationals manufacturing

Year 10 CN Design Students - Joseph Bromage, Reegan Sharpe, Zara Hassan, Ka'Shara Clue

Year 10 CAD Enrichment - Glynnis Bautista, Meryshka Bautista, Michailis Ensell, Lily Exton, Kai Williams-Bond, Regan Sharpe

Year 11 CAD Enrichment - Tom Boyce, Ethan Roberts

Aflie Fryer, Connor Scott. **Excelled in the workshop and have gone above and beyond.**

Year 11 Students- Jude Van, Connor Evans, Brandon Stevens, Slava Zaporozhan

Year 13 Students- Caira Hamilton is producing outstanding work and exam results in Product Design.

Sixth Form Art Students-

Manuel Bautista, Noah Dilloway, Mia Hill, Meryshka Bautista- for all working extremely hard in Art and design and spending lots of free time working independently.

A level Electronics

Mia Hill, DeAngelo Campbell, Charlie Toal , Antony Hinton , Jay Fletcher and Phoebe Williams have worked tremendously hard.

Half term commendations went to DeAngelo and Mia. Well done!

Enrichment -

F1 for Schools - Ahmed Asim, Muhammad Asim, Taha Asim, Deangelo campbell, Jarred Cuninghame, Raul Damitru, Conor Evan's, Lewis Hamilton ,Elliot John, Ethan John, Grace palmer, Alfie Simpson, Yuvraj sond, Joseph Spiers, Sam Line, Stanley Parker.

Green power students- Coben Coton, Jeevan Sagoo & Charlie-May Nicholls - for demonstrating team leadership and perseverance in the car's wiring and steering dynamics.

WHAT'S NEW AND UPCOMING?

Greenpower Trip- Students are going to be taking part in the Greenpower competition in March. The students will be going to Mallory Park, Leicestershire to participate in race day preparations for having their cars checked to see if they meet the Racing Regulations.

The Engineering Team



Meet the faces of the academy



Mrs O'Malley, Assistant Principal

If you weren't working here, what would your dream job be?

My dream job would be to open and run a doggy day care with a café attached to it. I absolutely adore dogs and I enjoy baking. I would love to have people drop their dogs off for a day of stay, play and walks whilst I provide them with a coffee and a home baked treat to set them up for their day,.

In what ways do you feel WMG Academy supports its students to achieve their best?

Student progress and welfare is at the heart of everything they do. We ensure that students build positive and supportive relationships with their form tutors. They are the first port of call for our students and any support or advice they need. Our teaching staff are all experienced and skilled in their subject area and can therefore deliver our curriculum to the highest of standards. We ensure that any students needing additional support are given this - whether this be with their learning or their wellbeing. Together, our pastoral and teaching staff work together to ensure all students are supported during their time with us.

What do you enjoy most about working here?

Having started working at WMG Academy Solihull in September, I am really enjoying my new role. I particularly enjoy the atmosphere at WMG Academy. Due to the STEM focus at the Academy, there is a purposeful working environment wherever you go. Students are treated like mature young adults and are always being prepared and supported for their next steps - whether that be an apprenticeship or college.

What do you think makes WMG Academy different from other schools or colleges?

The people in it! We have students come from many different schools to join us in year 10. Each with their own set of different experiences in education. Everyone has something different to share and their own reasons for coming here.

What unique opportunities or experiences do students at WMG receive that they might not get anywhere else?

Our employer engagement programme. Our students benefit from our employer links and partners and have regular opportunities to have realistic experiences and opportunities of the world of work. Our relationships with our Business Partners also allows our students to make informed choices about apprenticeships or jobs they are interested in pursuing.



Worried about your child's health? Think 'Pharmacy First'...



Having health concerns?
Think 'Pharmacy First'

It's a free and confidential way to get qualified help

Infected insect bites

From age 1

Earache

Ages 1-17

Impetigo

From age 1

Sinusitis

From age 12

Sore throat

From age 5

Most community pharmacies across Birmingham and Solihull can provide advice and treatment for your child – for these common conditions – and it can be much quicker than seeing your GP!

Visit the [NHS Birmingham and Solihull website](#) to see what your local community pharmacy can offer.

*Patients already exempt from prescription charges, i.e. children, will still get their treatment for free for the listed conditions. Otherwise usual prescription charges will apply.

Think Pharmacy First.

THINK PHARMACY
FIRST VIDEO LINK

SAFER INTERNET DAY

Safer Internet Day 2025 took place on the 11th of February 2025, with form group activities based around the theme 'Too good to be true? Protecting yourself and others from scams online'.

Safer Internet Day is the UK's biggest celebration of online safety. Each year they cover an online issue or theme that speaks about the things young people are seeing and experiencing online. Created in consultation with young people across the UK, this year Safer Internet Day will be focusing on the issue of scams online and for young people, how to protect themselves and others, as well as what support is available to them. For Parents/Carers a guide has been produced to support conversations with your son/daughter around this topic. <https://saferinternet.org.uk/guide-and-resource/parents-and-carers>

SOLIHULL INOURPLACE-FREE ONLINE COURSES FOR ALL SOLIHULL FAMILIES

Nurturing emotional health and wellbeing from antenatal throughout childhood and adolescence. Solihull Metropolitan Borough Council, in partnership with the Solihull Approach, offers free access to inourplace evidence-based online courses expertly designed by NHS professionals.

Sign up to better understand your child's feelings and behaviour and raise them to be emotionally aware, sociable and confident. Courses are tailored for all stages of a child's development to help all family members through reflective, supportive learning without judgment.

Please follow this link for further details; <https://inourplace.co.uk/solihull/>

SAFEGUARDING AND WELL-BEING FEBRUARY 2025

ALTHOUGH THE ACADEMY WILL BE CLOSED OVER THE HALF TERM BREAK, THE SAFEGUARDING AND WELL-BEING OF STUDENTS WILL CONTINUE TO BE MONITORED DURING THIS PERIOD.

IF YOU HAVE ANY CONCERNS, PLEASE CONTACT THE ACADEMY AT SOLIHULL.INFO@WMGACADEMY.ORG.UK AND MARK THE EMAIL 'SAFEGUARDING CONFIDENTIAL FAO OF DSL'. IF YOU HAVE CONCERNS THAT A CHILD IS AT RISK OF HARM OR IS BEING HARMED, PLEASE CONTACT YOUR LOCAL MULTI-AGENCY SAFEGUARDING HUB (MASH), DETAILS OF WHICH ARE AVAILABLE AT: [HTTPS://SOLIHULL.WMGACADEMY.ORG.UK/SAFEGUARDING/OUT-OF-HOURS-CONTACTS](https://solihull.wmgacademy.org.uk/safeguarding/out-of-hours-contacts)

IMPORTANT DATES FOR YOUR DIARY

FRIDAY 14 TH FEBRUARY 2025	ACADEMY CLOSURES FOR HALF TERM
MONDAY 24 TH FEBRUARY 2025	ACADEMY OPENS AFTER HALF TERM
TUESDAY 25 TH FEBRUARY 2025	YEAR 10 AND 11 GEOGRAPHY TRIP
MONDAY 3 RD – FRIDAY 7 TH MARCH 2025	NATIONAL CAREERS WEEK
MONDAY 3 RD MARCH 2025	NATIONAL OFFER DAY YEAR 10
WEDNESDAY 5 TH MARCH 2025	YEAR 11 AND 13 MOCK RESULTS DAY
THURSDAY 6 TH MARCH 2025	YEAR 11 AND YEAR 13 REPORTS TO PARENTS
MONDAY 10 TH – FRIDAY 14 TH MARCH 2025	BRITISH SCIENCE WEEK
TUESDAY 11 TH MARCH 2025	YEAR 11 PARENTS EVENING
MONDAY 17 TH MARCH 2025	SUPER LEARNING DAY - YEAR 10 & 11
WEDNESDAY 19 TH MARCH 2025	YEAR 13 PARENTS EVENING
FRIDAY 21 ST MARCH 2025	INSET DAY
FRIDAY 4 TH APRIL 2025	YEAR 10 TRIP TO SPACE CENTRE
TUESDAY 8 TH APRIL 2025	SPACE CENTRE TRIP
FRIDAY 11 TH APRIL 2025	ACADEMY CLOSURES FOR SPRING TERM
MONDAY 28 TH FEBRUARY 2025	ACADEMY OPENS FOR AFTER HALF TERM

WMG
Academy for Young 
engineers
Coventry



Happy February Half Term