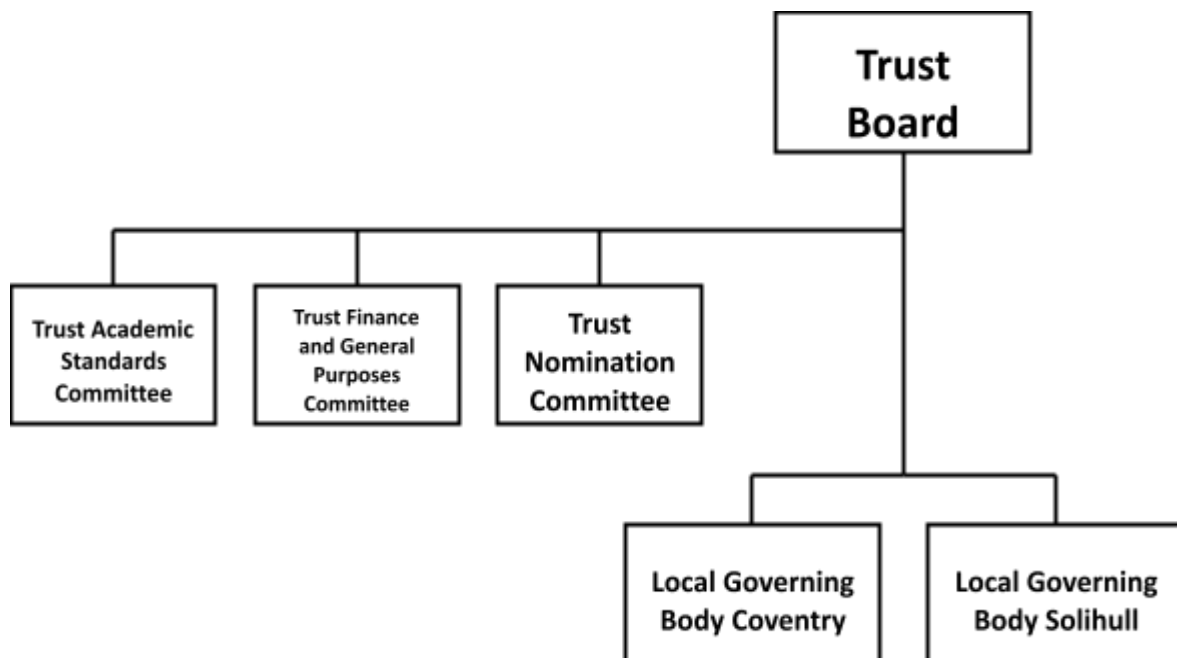


WMG Academy Trust Governance Structure

WMG Academy for Young Engineers is overseen by the WMG Academy Trust. The Trust is made up of members from industry and the University of Warwick who have led the development of WMG Academy and oversee its running from a strategic perspective. This includes financial accountability, resource planning and overall academic standards.

The Trust Board is complemented by a number of committees that meet to discuss matters relating to specific areas of the Academy Trust. Each Academy also has a Local Governing Body, the Chair of which also sits on the Trust Board. The Local Governing Body is primarily responsible for ensuring high academic standards but also oversee some operational matters, including the behaviour, admissions and exclusions policies.



Trust Board and Governing Body Chairpersons

- Chair of Trust Board – Ms Christine Ennew
- Chair of Academic Standards Committee – Ms Christine Ennew
- Chair of Trust Finance & General Purpose Committee – Ms Philippa Glover
- Chair of Trust Nominations Committee – Ms Christine Ennew
- Chair of Coventry LGB – Mr Jamie King
- Chair of Solihull LGB – Dr Richard Earp.